

Checklist: Client profile

Household:

Two adults, with two grown-up children who no longer live at home.

Lifestyle and Interests:

The clients enjoy travelling, sports, entertaining guests and cooking.

They do not currently have a dog but may consider getting one in the future.

Functional Requirements for the Garden

Outdoor Living:

- Space for morning coffee, as well as lunch and dinner outdoors when weather permits.
- The garden should accommodate larger gatherings and parties.
- The overall atmosphere should be social and relaxed.

Edible and Wildlife-Friendly Elements:

- Areas for growing herbs, rhubarb, fruit, and berries.
- The planting should attract pollinators and butterflies.

Additional Functional Elements:

- No lawn nor ornamental grasses.
- Compost area and rainwater harvesting system.
- A water feature of some kind (e.g. a fountain, pond or rill).
- Parking space for two vehicles.

Design Preferences

All-Year-Round Beauty:

- The garden should offer seasonal interest throughout the year:
 - A welcoming winter character
 - Early spring blossoms
 - Colourful autumn foliage
- It should always feel inviting and pleasant.

Form and Structure:

- Soft, flowing, and organic shapes for planting beds.
- Structural and hard materials may follow a more formal and straight-lined design.
- The clients are inspired by romantic English cottage gardens with a dreamy, nostalgic quality.
- Fragrant planting is important.
- The garden must be low maintenance, especially during high summer, which is when the clients are primarily based in Sweden.

Plant Preferences

Favoured Plants:

- Phlox, lavender, roses, bluebells, hydrangeas, cosmos, sage.

Preferred Colours:

- White, green, grey-green, blue and soft pink.

Avoided Colours:

- Yellow, orange and red.

Hard Materials and Architectural Context

Materials:

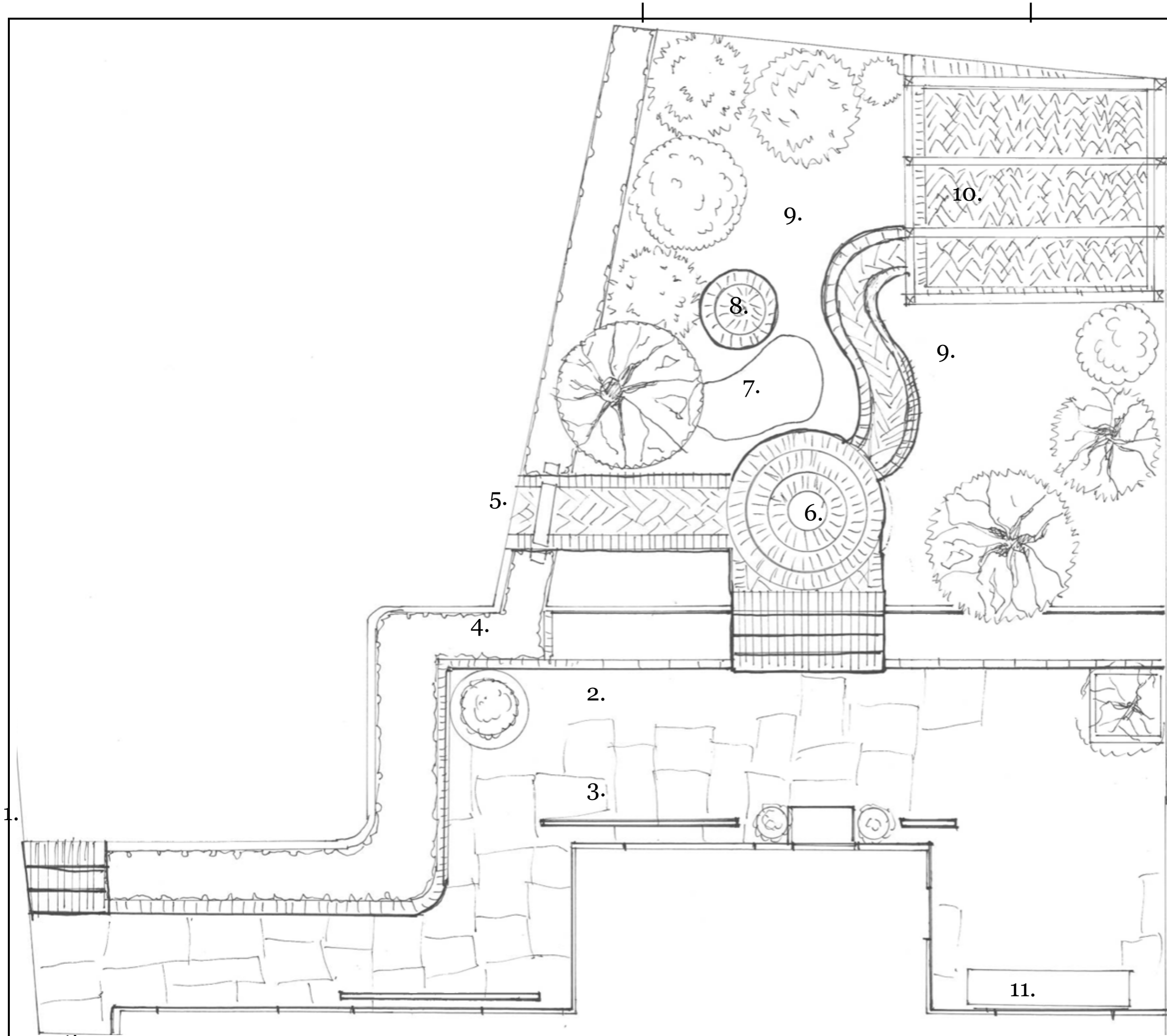
- Natural materials such as limestone and other types of stone are preferred.

House Style:

- Georgian architecture with red brick walls and a dark grey slate roof.

Moodboard





New Functions and Structure

1. New staircase
2. Extending the loggia space by approx. 70 cm by reducing the upper flower bed and transforming part into a sunken garden. Limestone slabs.
3. Rainwater drainage and underground water tank underneath slabs.
4. Old staircase removed to make room for a new hedge bed.
5. Entrance with white wooden gate.
6. Paths (straight and curvy) and staircase in Herringbone pattern, made by reusing red bricks with light-colored stone grout.
7. Shallow pond, partially located under a willow tree. Consider adding a small fountain.
8. Small shaded seating area with red brick surface.
9. No lawn, only ground-covering plants.
10. Lounge area with red brick flooring in herringbone pattern and a pergola covered in wisteria. Pergola made from impregnated pine, which will weather to a silver-grey finish without maintenance.
11. Outdoor kitchen and BBQ, easily accessible from the indoor kitchen

Theme: Welcome Home!

Address

Architect

Anna-lena Wolfe

Info@annalenaw.Com, + 46 732326498

Scale

1:50 A3

Datum

20250620

Content; Concept Drawing, 2.0

Measurements must be controlled in place

Företag/Arkitekt

annalenaw


www.annalenaw.com



Planting and flower beds

1. Woodland and pond
2. Lounge
3. Mediterranean area and Cherry and roses
4. Entrance and sunken garden
5. Open loggia, Pots, hedge and fences

Note: The steppstones will be replaced with curvy brick path in Herringbone pattern.
Lounges will have floor of red brick in Herringbone patterns

Theme: Welcome Home!	
Address	
Architect	
Anna-Lena Wolfe	
Info@annalenaw.Com , +46 732326498	
Scale	Datum
1:50 A3	20250620
Content; Illustrationplan	
	
www.annalenaw.com	



Lounge floor with Herringbone pattern.
Curvy narrow paths in Herringbone running from center
of Garden to the Lounge area. Previously stepstones



The upper right drawing shows the lounge area. The wooden construction of the pergola is slightly higher in the front, facing the house allowing a a free, open-air feeling. The lounge area can be furnished with low-seated sofas with low sofa tables for relaxation. The pergola is covered with blooming wisteria, its cascading light purple clusters forming a cooling canopy and perfuming the early summer air. The surrounding fence and pergola is decorated with hanging electric bulbs for the right “cool summer party” vibe. Beneath, a cozy lounge area with soft cushions and natural wooden accents invites family and friends to unwind and socialize. Surrounding the lounge, ground covers like geranium, phlox and thyme, shrubs like buddleia, figs and white roses to add colour and scent. The olive tree, with its silvery-green leaves, is planted within a bed filled with artemisia, bistorta and eryngium planted in drifts to compliment its subtle tones. This bed also contains fragrance coming from herbs, sage, hyssop and lavender—both beautiful and practical for the kitchen.

The drawing to the left shows the woodland area, the pond and the small sitting area. When the garden is flooded with bright sun beams on hot summer days, it can nice to have a place to withdraw into the shade, have a cup of tea, read the Guardian and enjoy the view of the rest of the garden. The pond is also an important feature for birds and butterflies that need water during the hot summer days. The pond area of the garden will therefore be a place for both tranquility and vibrancy. By using different colours and shades in the shrubs, in particular a dark red spirea in the corner between lighter green shrubs, a feeling of depth is created by simply fooling the eye.



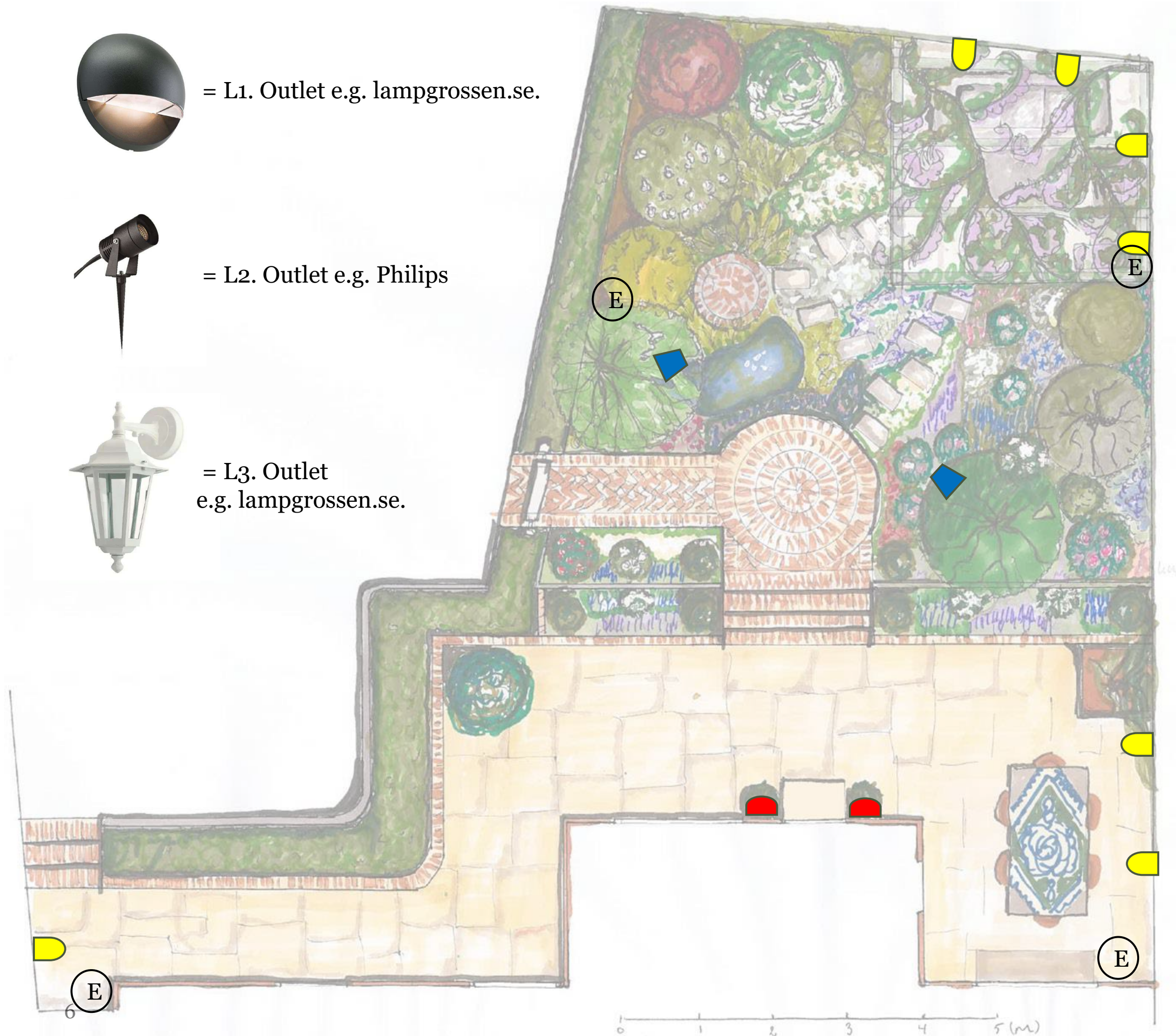
= L1. Outlet e.g. lampgrossen.se.




= L2. Outlet e.g. Philips





= L3. Outlet
e.g. lampgrossen.se.




Lightning plan


 = L1, Soft warm light on wall or fence in the lounge area, dining area and narrow staircase from car park.

 = L2, Cold spots to highlight the Cherry tree and the Willow tree. With a cold light, the colours of the tree will be brighter and more lush.

 = L3, Warm welcoming light fixed on both side of Entrance door.

 = Electricity outlet.

 = Electricity distribution
Not discussed, but should be coming from house or garage

Theme Welcome Home!	
Address	
Architect Anna-lena Wolfe Info@annalenaw.Com , + 46 732326498	
Scale 1:50 A3	Datum 20250620
Content; Lightningplan	
Företag/Arkitekt  www.annalenaw.com	